



SUSTAINABLE WINEGROWING AUSTRALIA

REGIONAL ANNUAL RESULTS

CLARE VALLEY 2023/24

Clare Valley Wine & Grape Association
clarevalleywine.com.au



**SUSTAINABLE
WINEGROWING
AUSTRALIA**

Clare Valley Wine &
Grape Association

CLARE
VALLEY

SUSTAINABLE WINEGROWING AUSTRALIA

ABOUT THE PROGRAM

Sustainable Winegrowing Australia is Australia's national program for grapegrowers and winemakers to demonstrate and continuously improve their sustainability in the vineyard and winery through the environmental, social and economic aspects of their businesses.

The program takes a holistic approach to managing, supporting and promoting sustainability. It fosters stronger relationships between growers, wineries and their regions. It also provides authority and confidence to customers, who receive reliable certified produce to address growing global consumer demand. No matter where a grapegrower or winemaker is on the journey, the program is relevant and user-friendly.

Sustainable Winegrowing Australia is a voluntary program designed with flexibility to suit the changing goals and needs of all Australian grape and wine producers. It informs and contributes to the identification of priorities for wine industry research, development and extension activities and can be used by members for benchmarking.

The program is administered by the Australian Wine Research Institute with governance, endorsement and active support from Australian Grape & Wine and Wine Australia. The program is modelled on global best practices and aligned to the United Nations Sustainable Development Goals, with progress towards these monitored annually.



“The Clare Valley wine region is embracing sustainable winegrowing whole heartedly, proudly looking after our vineyards and wineries for the next generation”,
Mitchell Taylor, Chair, CVWGA.

Sustainable Winegrowing Australia is a community of like-minded growers and winemakers who want to produce exceptional wines that make a positive difference for people and the planet.

BECOMING A CERTIFIED MEMBER



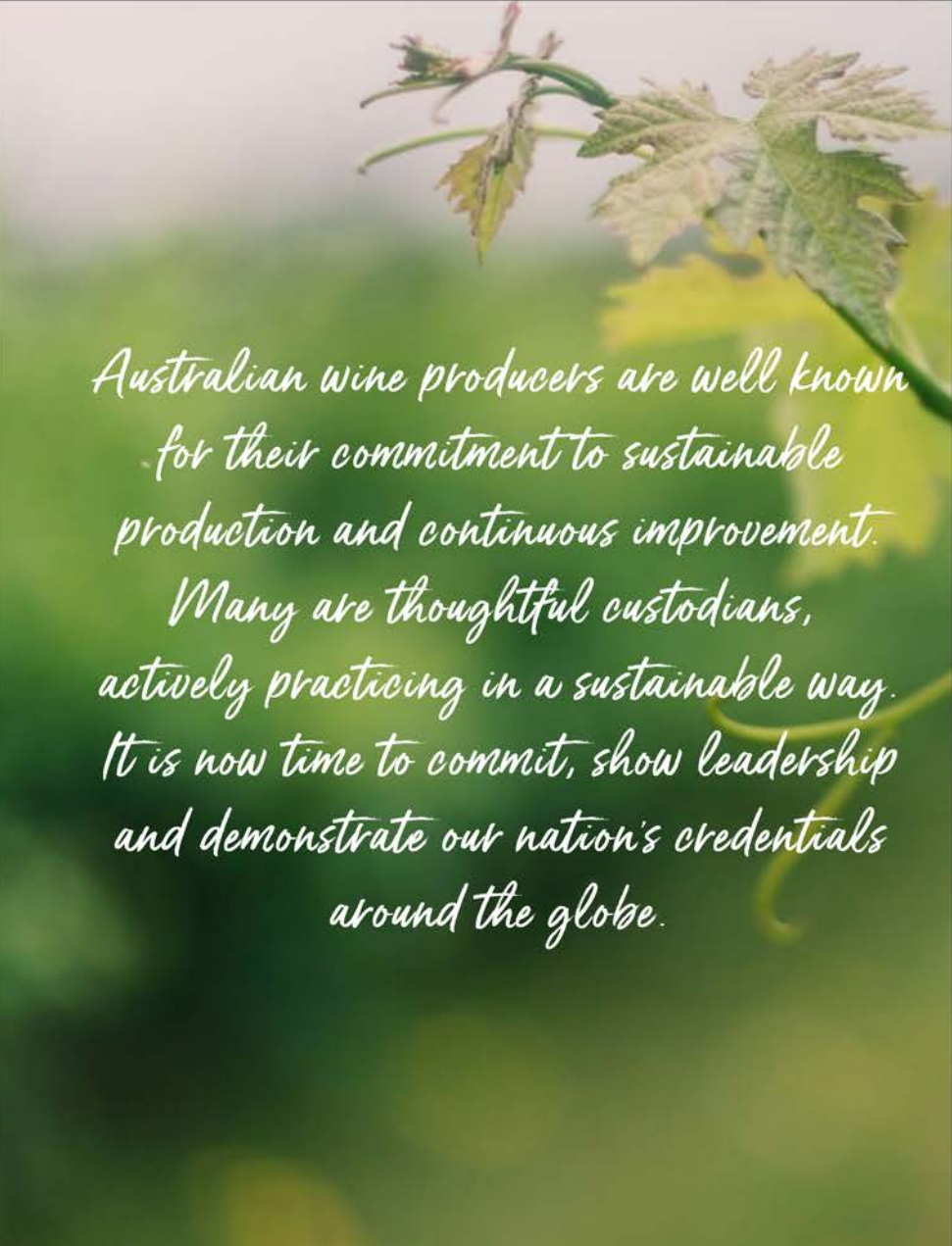
Sustainable Winegrowing Australia members wishing to become certified must complete an independent audit against the Australian Wine Industry Standards of Sustainable Practice (AWISSP) for Viticulture and Wineries.

To maintain certification, a successful audit must be undertaken every three years by an approved certification body.

Benefits of certification:

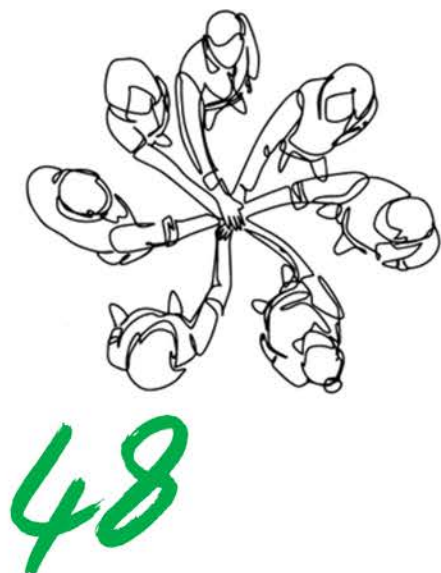
- peace of mind that your sustainability claims have been independently verified.
- use of a certified trust mark - an assurance to customers and consumers of how the product is produced
- enhanced international marketing through Wine Australia's marketing program
- integration of sustainability stories into Wine Australia's education and content for customers and consumers

Source: Sustainable Winegrowing Australia

A close-up photograph of a green grapevine leaf, showing its veins and serrated edges. The leaf is slightly out of focus, with a soft background of more green foliage.

*Australian wine producers are well known
for their commitment to sustainable
production and continuous improvement.
Many are thoughtful custodians,
actively practicing in a sustainable way.
It is now time to commit, show leadership
and demonstrate our nation's credentials
around the globe.*

MEMBERSHIP



TOTAL MEMBERS

38 vineyard sites and 6 winery sites.

↑ 12 members from previous year

More than half the Sustainable Winegrowing vineyard members operate vineyards less than 50Ha in size, reflecting the importance of family wineries and vineyards to the region.

21



CERTIFIED MEMBERS

Members who have participated in and passed an audit with an independent authority, standards maintained by Freshcare.

↑ 40% from previous year.



64%

% OF TOTAL PLANTED AREA UNDER SUSTAINABLE WINEGROWING AUSTRALIA

↑ 10 % from previous year

Source: (SA Winegrape Crush Survey, 2024.
Wine Australia, July 2024.

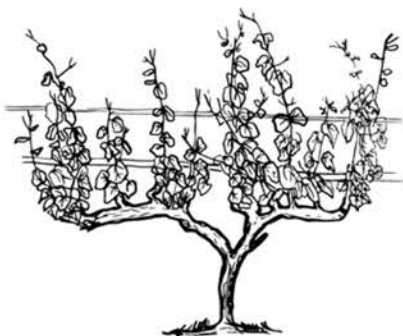
VINEYARD SITES

3,179

TOTAL VINEYARD
HECTARES

Clare Valley regional
vineyard members with Sustainable
Winegrowing Australia.

↑ 411 hectares from previous year



5.6

TONNES / HECTARE

Frost in late October 2023 had a substantial impact on the regional crush, reducing the average yield for Clare Valley Sustainable Winegrowing members by 1t/ha on the previous year.



15,979

TONNES CRUSHED

84% of the regional crush, an increase of 16% on the previous year.

Source: Clare Valley Wine Industry Fund , 2024

Despite the growth in membership, Total crush for Clare Valley regional Sustainable Winegrowing Australia members was down on previous years due to the impact of frost and dry seasonal conditiona

BIODIVERSITY



313

BIODIVERSITY AREA
HECTARES

(vineyards)

↑ 10% from previous year, most likely
correlated to the membership
increase.

74%

PROTECTING
AND ENHANCING
EXISTING
BIODIVERSITY

% members taking action to protect and
enhance biodiversity on their
properties. 34% have documented this in
a Sustainability Action Plan.
(vineyard).



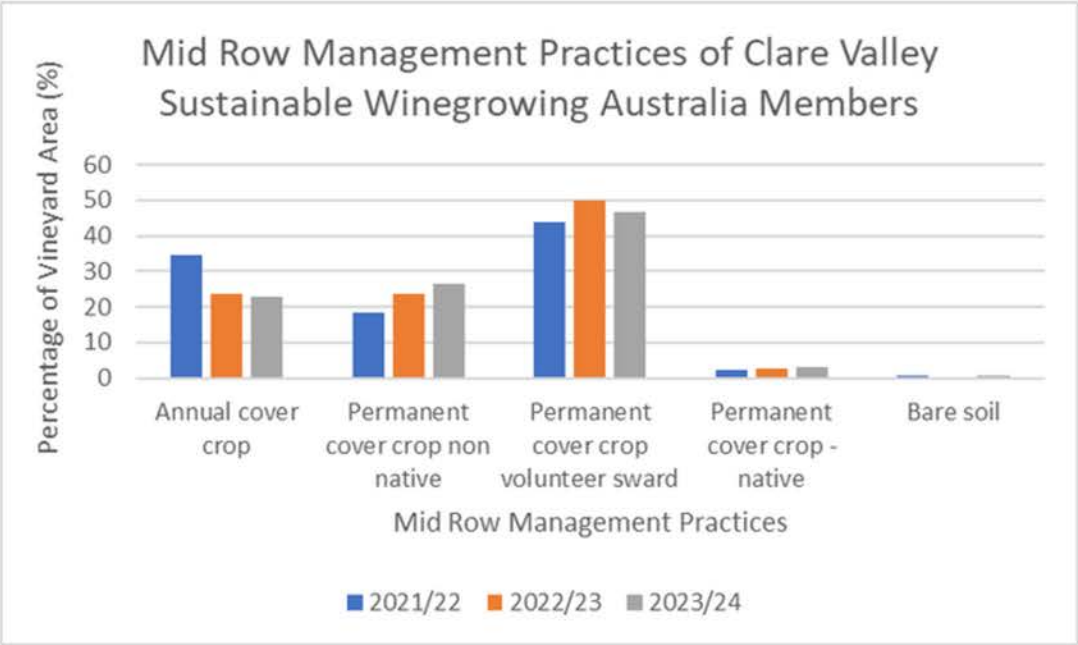
72%

BIODIVERSITY PROJECTS

(vineyard and winery).

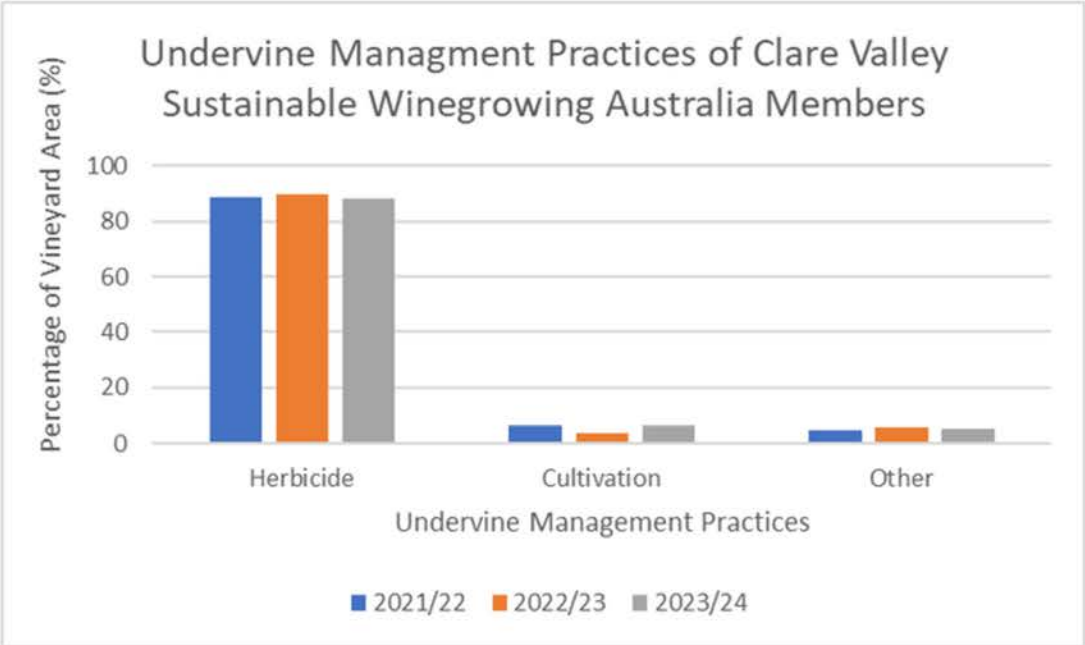
% members participating in on- or off-site
biodiversity projects .

LAND AND SOIL HEALTH



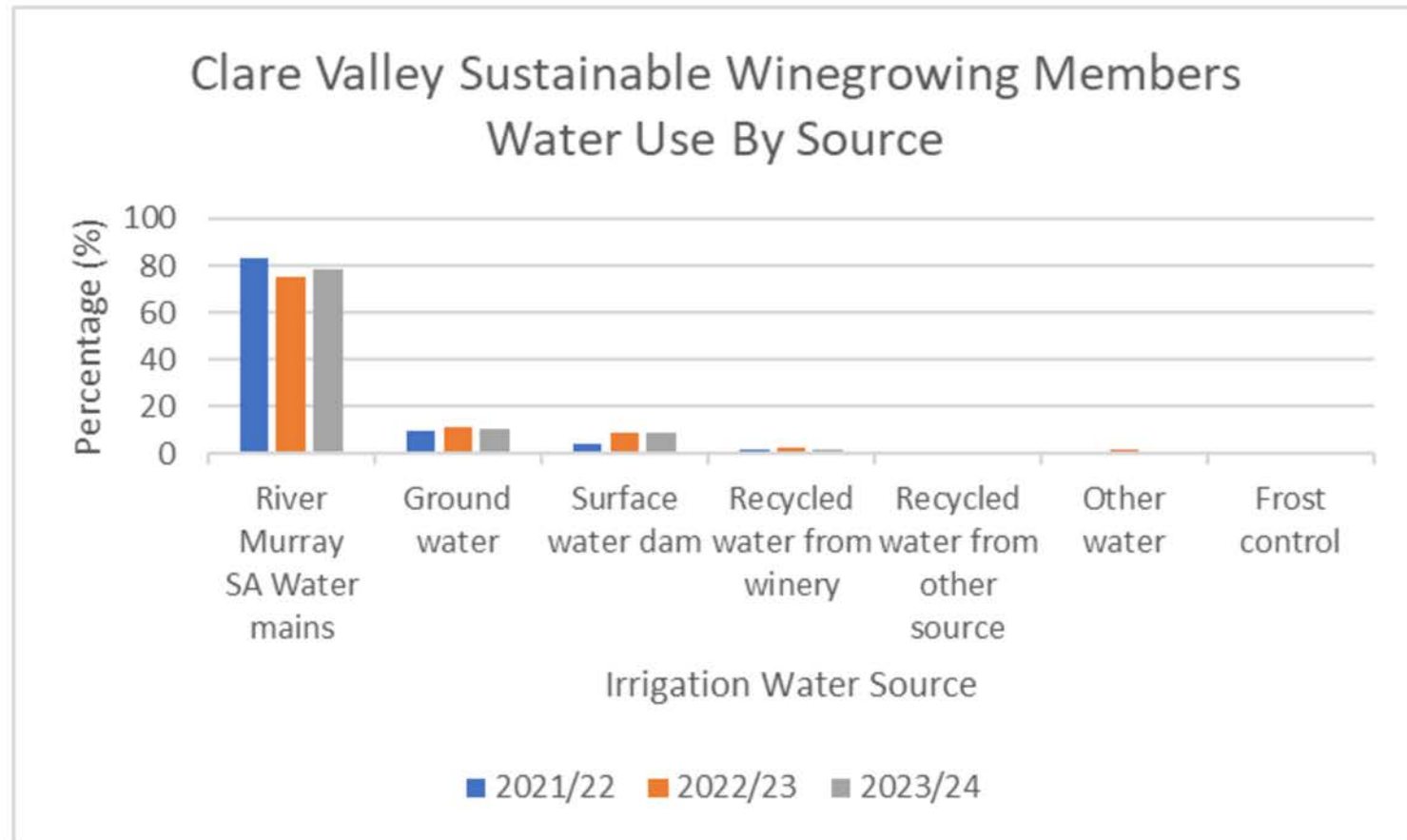
- 76% of the vineyard area of Clare Valley Sustainable Winegrowing members has a permanent sward in the midrow, either a permanent cover crop or volunteer sward. The rest of the members sow an annual cover crop, with only 1% of the mid-row area cultivated and left as bare soil.

Permanent ground cover is a mid-row management strategy to improve soil health, preventing erosion, increasing organic matter and enhancing soil biodiversity.



- Herbicide is used by the majority of Clare Valley Sustainable Winegrape members to control weeds in the under-vine area with herbicide used on 90% of the Clare Valley Sustainable Winegrowing members under-vine area. 6% of the under-vine area is still cultivated and 5 percent is managed using non-chemical weed control.

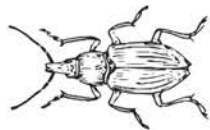
CLARE VALLEY SUSTAINABLE WINEGROWING MEMBERS WATER USE BY SOURCE



Native water resources are deteriorating and the Murray River is the primary source of irrigation water for Clare Valley vineyards, delivered through SA Water's Clare Valley Water Supply Scheme. Potable water is supplied at the Statewide price and through more affordable transportation arrangements with an average price estimated at \$2,300/ML.

Growers closely monitor water use and adjust irrigation to seasonal demand. Clare Valley vineyards are very efficient with irrigation water use, applying an average of 0.6 Megalitres per hectare.

VINEYARD



BIOSECURITY

80%

Of businesses have a strong understanding of key biosecurity risk pathways and take action to manage them. The businesses are aware of endemic and exotic pest biosecurity threats and impacts on vine health. 46% of members are at best practice or above.

83%

Vineyard monitoring is undertaken regularly. If unusual plant pests, diseases or weeds are found, help is sought to identify the issue. 40% of members are at best practice or above.

60%

Source planting material from approved suppliers (e.g. accredited nurseries or vine improvement associations). A record of health status is/has been obtained for all grapevine planting material prior to purchase. 46% of members are at best practice or above.



LAND, SOIL AND FERTILISER MANAGEMENT

51%

Have identified major soil types and areas at risk or affected by degradation on a vineyard map(s) and are familiar with visible symptoms in grapevines affected by salinity, soil compaction, acidity or alkalinity.

60%

Soil organic carbon levels are known and managed to prevent decline. 43% of members test soil organic carbon at least every three years to track soil organic matter and manage areas in decline by increasing ground cover and avoiding cultivation.

63%

Locate, construct and maintain fertiliser storage and handling areas to minimise harm to off-target and sensitive areas from nutrient run-off or leaching. 43% of members are at best practice or above.



PEST AND DISEASE

83%

Consider alerts from industry or qualified personnel. The vineyard is monitored for pest, weed and disease and the weather is observed. The main pests, weeds and disease have been identified and are targeted at critical times of the year. 60% of members are at best practice or above.

66%

Spray equipment is maintained and checked for effective operation before and after each use. Before each spray round, spray unit filters and nozzles are checked. 49% of members are at best practice or above.

74%

Check weather conditions regularly during spraying, and spraying is stopped if off-target spray drift is likely. 60% of members are at best practice or above.

VINEYARD

WATER



60%

Rootzone and water holding capacity is understood for most blocks and is considered when planning irrigation. Irrigation is based on soil moisture and or leaf water data. 54% of members are at best practice or above.

71%

Have a plan for managing water. Irrigation is based on results of soil, crop or weather monitoring or a combination thereof. 43% of members are at best practice or above.

83% ↑ 12% from previous year

Manage the impacts of adverse weather events using strategic irrigation application before and during (if required) these conditions. 74 % of members are at best practice or above.

WASTE, AIR, ENERGY & FUEL



77%

Separate waste into types and store to minimise the risk of contaminating on and off-site areas. The business takes all reasonable and practicable steps to contain or secure transported waste. 46% of members are at best practice or above.

77%

Have taken action to minimise the impacts on air quality. 40% of members are at best practice or above.

80% ↑ 12% from previous year

Ensure energy and fuel efficiency is a priority to the business and incorporated into selection and/or design of new premises, vehicles, machinery and equipment. 43% of members are at best practice or above.

COMMUNITY AND BUSINESS



89%

The business engages with neighbours and the community when issues arise. The business contributes to the community in a positive way. 51% of members are at best practice or above.

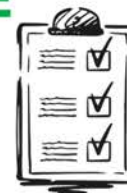
60%

Conduct grape sales based on signed written contracts which include block information, agreed price, quality expectations and delivery location. 51% of members are at best practice or above.

94%

Engage contractors based on references from other vineyards and/or on previous engagement by the business. 66% of members are at best practice or above.

DOCUMENTATION OF SUSTAINABLE MANAGEMENT



83%

Ensure vineyard operations are relevant to the sale of grapes are communicated to purchasing wineries. 74% of members are at best practice or above.

91%

Of businesses are committed to sustainable production. 46% of members are at best practice or above.

83%

Record business activities are kept. 51% of members are at best practice or above.

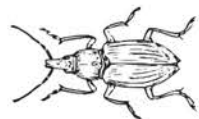
WINERY



WATER

90%

Of businesses have a plan to monitor and manage water. The usage volumes of water sources (i.e. bore, rainwater and mains water) for the business are monitored and recorded. 60% members are at best practice or above.



BIOSECURITY

80%

Of businesses have a strong understanding of key biosecurity risk pathways and take action to manage them. 60% of members are at best practise or above.



WASTE, AIR, ENERGY & FUEL

90%

Ensure waste is separated into types and stored to minimise the risk of contaminating on and off-site areas. The business takes all reasonable and practicable steps to contain or secure transported waste. 70% are at best practice or above.



CHEMICAL MANAGEMENT

80%

Of businesses are achieving best practice where purchase records are kept and recorded in an inventory, which also includes batch number (where available) and the expiry/manufacture date of products. A current Safety Data Sheet (SDS) is accessible for all hazardous chemicals relevant to the business.



COMMUNITY AND BUSINESS

100%

Of businesses engage with neighbours and the community when issues arise. The business contributes to the community in a positive way. 80% of members are at best practice or above.



WASTE WATER MANAGEMENT

70%

Ensure winery wastewater and storm water drain into the wastewater capture and management system. The volume of wastewater generated is measured and reviewed annually against the Water Management Program. 50% of members are at best practice or above.



DOCUMENTATION OF SUSTAINABLE MANAGEMENT

70%

Of businesses have established a Sustainability Action Plan to document action(s) planned to address sustainability issues and protect assets. They are achieving best practice with actions reviewed and updated and evidence of progress kept.

ACKNOWLEDGEMENTS

- Our growers, winemakers and community and region.
- Our Sustainable Australia Winegrowing (SAW) and Sustainable Winegrowing Australia Program users and supporters past and present.
- Our Chair, Board and Team at CVWGA. SA State Government and industry partners; Primary Industries and Regions SA (PIRSA), Wine Australia, Australian Grape & Wine, Australian Wine Research Institute - Executive and Management Teams, Board and Chairs (past and current).
- Our regional neighbours and partners.
- Our SWA Program contributors to all versions - Codes of Conduct Developers, SWA Chapter Authors and Reviewers, On-Line System Developer and Auditors.
- Data interpretation and document compilation - Amanda Mader Vine Scout/Gumpara Wines, Anna Baum CVWGA.

*This is a shared success in leadership
of our regional community and
grape and wine community.*

Publisher: Clare Valley Wine & Grape Association



**SUSTAINABLE
WINEGROWING
AUSTRALIA**

sustainablewinegrowing.com.au

A COLLABORATION BETWEEN



**Wine
Australia**

AWRI Australian
Wine
Research
Institute